

itl boulder

THE LIGHT CENTER OF THE INDUSTRY SINCE 1955

INDEPENDENT TESTING LABORATORIES, INC.
3386 LONGHORN ROAD, BOULDER, CO 80302 USA

PHONE: (303)442-1255 • FAX: (303)449-5274 • E-MAIL: itl@itlboulder.com • WEBSITE: www.itlboulder.com

REPORT NUMBER: ITL57488
PREPARED FOR: OXYGEN LIGHTING
CATALOG NUMBER: 2-597-24

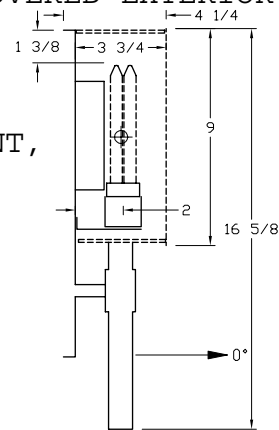
DATE: 05/30/06

LUMINAIRE: FABRICATED SEMI-DIFFUSE METAL MOUNTING PLATE, FORMED WHITE PAINTED METAL SOCKET MOUNTING BRACKET, TRANSLUCENT WHITE PLASTIC DIFFUSER WITH WHITE CLOTH COVERED EXTERIOR, TRANSLUCENT WHITE PLASTIC TOP AND BOTTOM CAPS. BALLAST IS EXPOSED IN THE OPTICAL COMPARTMENT AND CENTERED AT TOP OF MOUNTING PLATE.

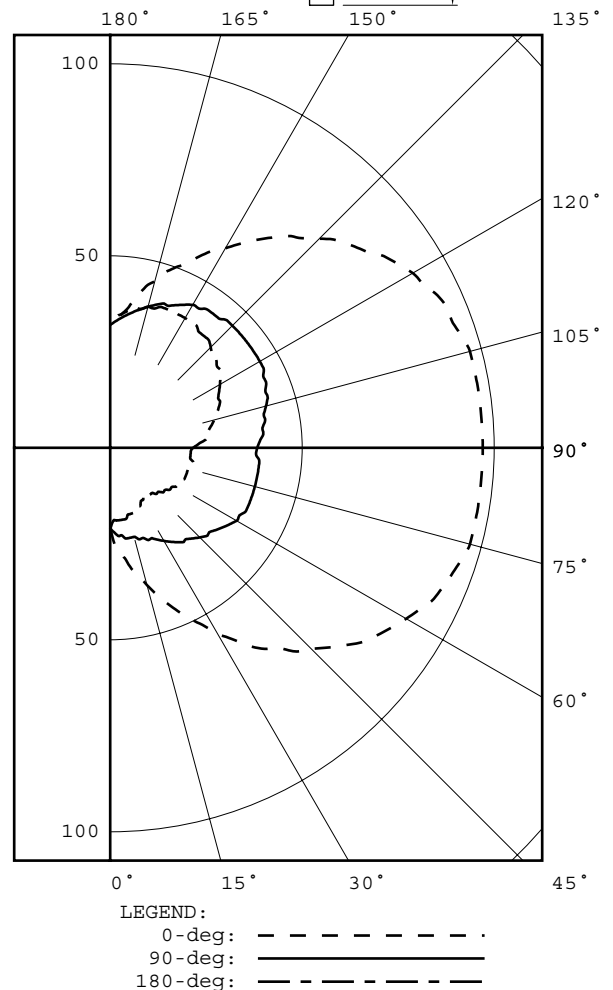
LAMP: ONE 26-WATT DOUBLE TWIN TUBE COMPACT FLUORESCENT, SYLVANIA CF26DD/E/830, VERTICAL BASE-DOWN POSITION.

BALLAST: ANTRON CSS-UV42PS
MOUNTING: WALL

TOTAL INPUT WATTS= 24.2 AT 120.0 VOLTS
REPORT IS BASED ON 1800 LUMENS PER LAMP.



CANDELA DISTRIBUTION						FLUX
	0.0	45.0	90.0	135.0	180.0	
0	21	21	21	21	21	
5	27	26	23	20	19	2
15	37	32	24	19	18	7
25	49	40	26	20	17	14
35	63	49	30	19	15	21
45	74	57	33	20	17	30
55	85	64	36	23	19	39
65	93	70	39	24	20	47
75	97	73	39	25	21	51
85	97	73	39	24	21	53
90	97	73	38	25	22	
95	97	74	40	28	25	55
105	97	74	42	30	28	55
115	94	73	44	34	31	53
125	87	69	45	36	35	47
135	77	63	45	38	37	39
145	66	56	44	39	39	30
155	55	49	41	39	39	20
165	45	42	38	37	38	11
175	35	35	34	35	35	3
180	32	32	32	32	32	

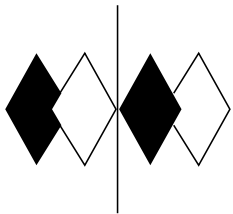


ZONAL LUMEN SUMMARY			
ZONE	LUMENS	%LAMP	%FIXT
0- 30	23	1.3	4.0
0- 40	45	2.5	7.7
0- 60	114	6.3	19.7
0- 90	264	14.7	45.8
90-120	162	9.0	28.1
90-130	209	11.6	36.3
90-150	278	15.5	48.2
90-180	313	17.4	54.2
0-180	578	32.1	100.0

TOTAL LUMINAIRE EFFICIENCY = 32.1 %

CIE TYPE - DIRECT-INDIRECT
PLANE : 0-DEG 90-DEG 180-DEG
SPACING CRITERIA : 3.6 2.2 1.1

Checked N. WHITE
Approved R. BEATTIE



itl boulder
THE LIGHT CENTER OF THE INDUSTRY SINCE 1955

INDEPENDENT TESTING LABORATORIES, INC.
 3386 LONGHORN ROAD, BOULDER, CO 80302 USA

PHONE: (303)442-1255 • FAX: (303)449-5274 • E-MAIL: itl@itlboulder.com • WEBSITE: www.itlboulder.com

REPORT NUMBER: ITL57488
 PREPARED FOR: OXYGEN LIGHTING

DATE: 05/30/06

CANDELA DISTRIBUTION

	0.0	22.5	45.0	67.5	90.0	112.5	135.0	157.5	180.0
0.0	21	21	21	21	21	21	21	21	21
5.0	27	27	26	24	23	21	20	19	19
10.0	32	31	29	26	24	22	20	19	19
15.0	37	35	32	28	24	21	19	19	18
20.0	43	40	36	29	25	22	19	18	18
25.0	49	46	40	31	26	24	20	18	17
30.0	56	51	44	34	28	24	19	17	16
35.0	63	58	49	37	30	25	19	16	15
40.0	68	63	53	40	31	25	19	16	16
45.0	74	69	57	43	33	25	20	17	17
50.0	80	74	61	45	34	26	21	18	18
55.0	85	78	64	47	36	28	23	19	19
60.0	89	83	67	49	38	29	24	20	20
65.0	93	86	70	51	39	30	24	20	20
70.0	95	88	72	53	39	30	25	20	21
75.0	97	90	73	53	39	30	25	20	21
80.0	97	91	73	53	39	30	25	21	22
85.0	97	91	73	53	39	30	24	20	21
90.0	97	90	73	53	38	30	25	21	22
95.0	97	91	74	54	40	32	28	24	25
100.0	97	91	74	55	41	33	29	25	26
105.0	97	90	74	55	42	35	30	27	28
110.0	95	89	74	56	43	36	32	29	30
115.0	94	88	73	56	44	38	34	31	31
120.0	91	85	71	55	45	39	35	32	33
125.0	87	81	69	54	45	40	36	34	35
130.0	82	77	66	53	45	40	37	35	36
135.0	77	73	63	52	45	41	38	37	37
140.0	72	68	60	50	44	41	39	37	38
145.0	66	63	56	48	44	41	39	38	39
150.0	60	57	52	46	43	40	39	38	39
155.0	55	53	49	44	41	39	39	38	39
160.0	50	49	46	41	40	38	38	38	39
165.0	45	44	42	39	38	37	37	37	38
170.0	40	39	38	36	36	36	36	36	37
175.0	35	35	35	34	34	34	35	35	35
180.0	32	32	32	32	32	32	32	32	32



INDEPENDENT TESTING LABORATORIES, INC.
3386 LONGHORN ROAD, BOULDER, CO 80302 USA

PHONE: (303)442-1255 • FAX: (303)449-5274 • E-MAIL: itl@itlboulder.com • WEBSITE: www.itlboulder.com

REPORT NUMBER: ITL57488
PREPARED FOR: OXYGEN LIGHTING

DATE: 05/30/06

ZONAL LUMEN SUMMARY

0- 5	1.
5- 10	2.
10- 15	3.
15- 20	4.
20- 25	6.
25- 30	8.
30- 35	10.
35- 40	12.
40- 45	14.
45- 50	16.
50- 55	18.
55- 60	21.
60- 65	22.
65- 70	24.
70- 75	25.
75- 80	26.
80- 85	26.
85- 90	26.
90- 95	27.
95-100	28.
100-105	28.
105-110	27.
110-115	27.
115-120	26.
120-125	24.
125-130	23.
130-135	21.
135-140	19.
140-145	16.
145-150	14.
150-155	11.
155-160	9.
160-165	7.
165-170	5.
170-175	3.
175-180	1.



INDEPENDENT TESTING LABORATORIES, INC.
 3386 LONGHORN ROAD, BOULDER, CO 80302 USA

PHONE: (303)442-1255 • FAX: (303)449-5274 • E-MAIL: itl@itlboulder.com • WEBSITE: www.itlboulder.com

REPORT NUMBER: ITL57488

DATE: 05/30/06

PREPARED FOR: OXYGEN LIGHTING

COEFFICIENTS OF UTILIZATION - ZONAL CAVITY METHOD

EFFECTIVE FLOOR CAVITY REFLECTANCE 0.20

RC	80				70				50			30			10			0
	70	50	30	10	70	50	30	10	50	30	10	50	30	10	50	30	10	0
0	34	34	34	34	31	31	31	31	26	26	26	21	21	21	17	17	17	15
1	30	28	26	24	27	25	23	22	21	19	18	16	15	15	12	12	11	9
2	26	23	21	18	24	21	19	17	17	15	14	13	12	11	10	9	8	7
3	24	20	17	15	21	18	16	13	15	13	11	11	10	9	8	7	6	5
4	21	17	14	12	19	16	13	11	13	11	9	10	8	7	7	6	5	4
5	20	15	12	10	18	14	11	9	11	9	7	9	7	6	6	5	4	3
6	18	14	11	8	16	12	10	8	10	8	6	8	6	5	6	5	4	3
7	16	12	9	7	15	11	8	7	9	7	5	7	5	4	5	4	3	2
8	15	11	8	6	14	10	7	6	8	6	5	6	5	4	5	4	3	2
9	14	10	7	5	13	9	7	5	7	5	4	6	4	3	4	3	2	2
10	13	9	6	5	12	8	6	4	7	5	4	5	4	3	4	3	2	1

ALL CANDELA, LUMENS, LUMINANCE, COEFFICIENT OF UTILIZATION AND VCP VALUES IN THIS REPORT ARE BASED ON RELATIVE PHOTOMETRY WHICH ASSUMES A BALLAST FACTOR OF 1.000. ANY CALCULATIONS PREPARED FROM THESE DATA SHOULD INCLUDE AN APPROPRIATE BALLAST FACTOR.

NOTE: THE ZONAL CAVITY CALCULATION TECHNIQUE IS ACCURATE WHEN LUMINAIRES WITH SYMMETRIC CANDELA DISTRIBUTIONS ARE EMPLOYED AND WHEN THE LUMINAIRES ARE LOCATED SYMMETRICALLY THROUGHOUT THE ROOM. THIS UNIT HAS SPECIAL CHARACTERISTICS AND THEREFORE THESE COEFFICIENTS SHOULD BE USED WITH CAUTION.