

LEDA Outdoor

120v : **3-713-2xx**

277v : **37-713-2xx**

oxygen

FIXTURE TYPE _____

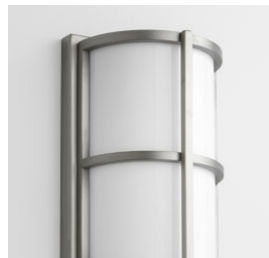
LOCATION _____

PROJECT _____

DATE _____

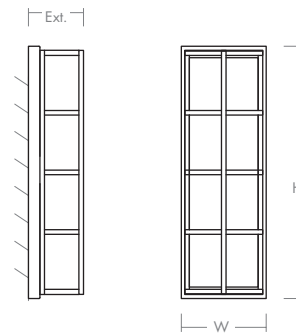
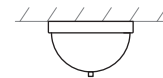


-22 Oiled Bronze



-24 Satin Nickel

- LIGHT SOURCE** 2 x 10.1W LED, 3000K, CRI 90
- LUMINAIRE POWER** 26.0W at 120V
- RATED LIFE** 60000 hr RL
- OPTIONAL COLOR TEMPERATURES** 2700K, 3500K, 4000K
- LUMEN OUTPUT** Delivered: 1347 lm (LM-79)
- INPUT VOLTAGE** 120V or 277V
- DRIVER OUTPUT** 2 x 350 mA, 12W
- DIMMING** 0-10v & Phase (ELV) Dimming - 50/60Hz 100% to 10% Dimming
- CONSTRUCTION** Cast Aluminium and Acrylic
- DIFFUSER** -2 Matte White Acrylic
- FINISHES** Oiled Bronze (-22), Satin Nickel (-24)
- MOUNTING** 4" Octagonal J-Box
(Installer must provide a bead of caulk between fixture housing and mounting surface)
- STANDARDS** ETL Wet, Conforms to UL STD 1598, Certified CAN/CSA, STD C22.2 No 250.0.



DIMENSIONS

- W:** 7.25"
- H:** 21.75"
- Ext:** 4.75"
- M.C:** 10.81" From top of fixture

Order example for standard fixture:

3-713-224 (x- Voltage - xxx-Sequence # - x-Diffuser - xx-Finish)

3: 120v, **37:** 277v

Order example for optional color temperatures: **3-713-27224**

27: 2700K, **35:** 3500K, **40:** 4000K

