

# LEDA Outdoor

120v : **3-713-2xx-EM**

277v : **37-713-2xx-EM**

# oxygen

FIXTURE TYPE \_\_\_\_\_

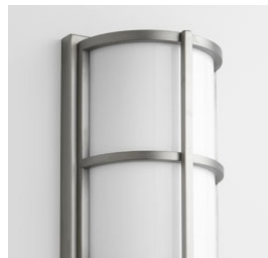
LOCATION \_\_\_\_\_

PROJECT \_\_\_\_\_

DATE \_\_\_\_\_

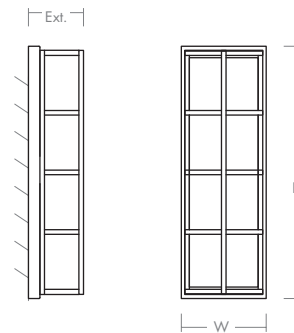
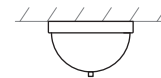


-22 Oiled Bronze



-24 Satin Nickel

<b>LIGHT SOURCE</b>	2 x 10.1W LED, 3000K, CRI 90
<b>LUMINAIRE POWER</b>	26.0W at 120V
<b>RATED LIFE</b>	60000 hr RL
<b>OPTIONAL COLOR TEMPERATURES</b>	2700K, 3500K, 4000K
<b>LUMEN OUTPUT</b>	Delivered: 1347 lm (LM-79)
<b>INPUT VOLTAGE</b>	120V or 277V
<b>DRIVER OUTPUT</b>	2 x 350 mA, 12W
<b>DIMMING</b>	0-10v & Phase (ELV) Dimming - 50/60Hz 100% to 10% Dimming
<b>CONSTRUCTION</b>	Cast Aluminium and Acrylic
<b>DIFFUSER</b>	-2 Matte White Acrylic
<b>FINISHES</b>	Oiled Bronze (-22), Satin Nickel (-24)
<b>MOUNTING</b>	4" Octagonal J-Box (Installer must provide a bead of caulk between fixture housing and mounting surface)
<b>STANDARDS</b>	ETL Wet, Conforms to UL STD 1598, Certified CAN/CSA, STD C22.2 No 250.0.



### DIMENSIONS

<b>W:</b>	<b>7.25"</b>
<b>H:</b>	<b>21.75"</b>
<b>Ext:</b>	<b>4.75"</b>
<b>M.C:</b>	<b>10.81" From top of fixture</b>

EM Battery Life	Fullham HotspotLED Series
EM Battery Life	90 Minutes Minimum

Order example for standard fixture:  
**3-713-224-EM** (x- Voltage - xxx-Sequence # - x-Diffuser - xx-Finish)  
**3:** 120v, **37:** 277v  
 Order example for optional color temperatures: **3-713-27224-EM**  
**27:** 2700K, **35:** 3500K, **40:** 4000K



Intertek