

LEDA Outdoor
3- 713-2xx-EM

oxygen

FIXTURE TYPE _____

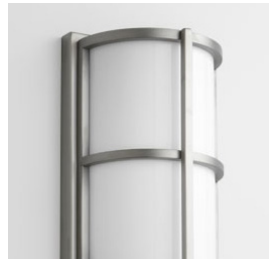
LOCATION _____

PROJECT _____

DATE _____

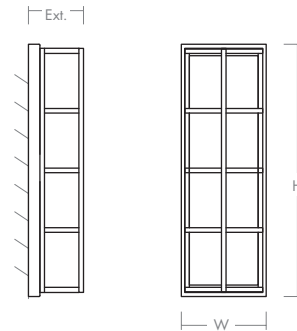
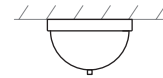


-22 Oiled Bronze



-24 Satin Nickel

- LIGHT SOURCE** 2 x 10.1W LED, 3000K, CRI 90
- LUMINAIRE POWER** 26.0W at 120V
- RATED LIFE** 60000 hr RL
- LUMEN OUTPUT** Delivered: 1347 lm (LM-79)
- INPUT VOLTAGE** 120V to 277V AC, 50/60Hz
- DRIVER OUTPUT** 700mA, 29.4W
- DIMMING** TRIAC and ELV dimming at 120V AC;
0-10V dimming, 100% to 10% current output
- CONSTRUCTION** Stainless Steel and Acrylic
- DIFFUSER** -2 Matte White Acrylic
- FINISHES** Oiled Bronze (-22), Satin Nickel (-24)
- MOUNTING** 4" Octagonal J-Box (Installer must provide a bead of
caulk between fixture housing and mounting surface)
- STANDARDS** ETL Wet, Conforms to UL STD 1598,
Certified CAN/CS STD C22.2 No 250.0.



DIMENSIONS

- W:** 7.25"
- H:** 21.75"
- Ext:** 4.75"
- M.C:** 10.81" From top of fixture

- EM Battery Life Fullham HotspotLED Series
- EM Battery Life 90 Minutes Minimum

Order example for standard fixture:
3-713-224-EM (x- Voltage - xxx-Sequence # - x-Diffuser - xx-Finish)
 3: 120V, 37: 277V

