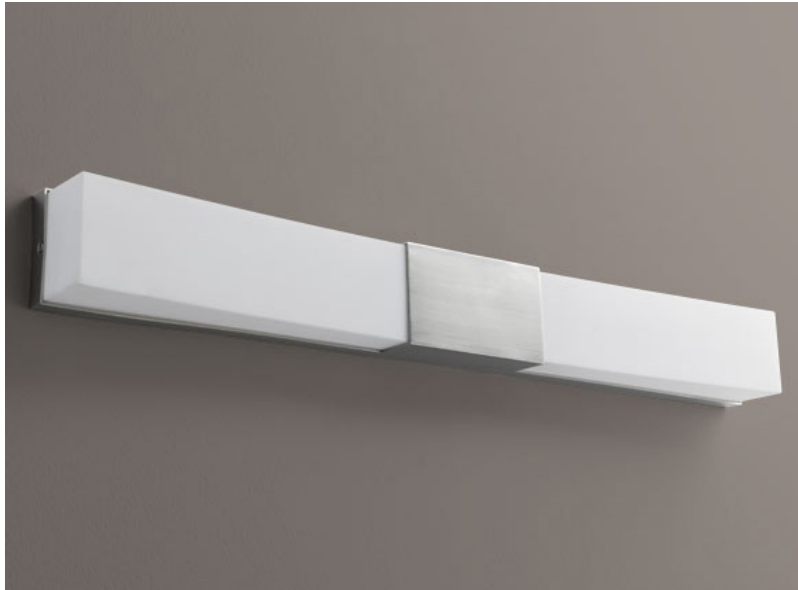


**CRESCENT Vanity**  
**3-582-24**

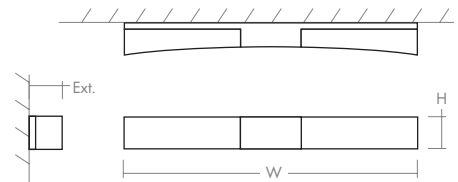
oxygen

FIXTURE TYPE \_\_\_\_\_ LOCATION \_\_\_\_\_  
PROJECT \_\_\_\_\_ DATE \_\_\_\_\_



-24 Satin Nickel

<b>LIGHT SOURCE</b>	2 x 12.1W LED, 3000K, CRI 90
<b>LUMINAIRE POWER</b>	28.9W at 120V
<b>RATED LIFE</b>	60000 hr RL
<b>OPTIONAL COLOR TEMPERATURES</b>	2700K, 3500K, 4000K
<b>LUMEN OUTPUT</b>	Delivered: 1864 lm (LM-79)
<b>INPUT VOLTAGE</b>	120V to 277V AC, 50/60Hz
<b>DRIVER OUTPUT</b>	700mA, 29.4W max power
<b>DIMMING</b>	TRIAC and ELV dimming at 120V AC; 0-10V dimming, 100% to 1% current output
<b>CONSTRUCTION</b>	Plated Steel and Acrylic
<b>DIFFUSER</b>	- Matte White Acrylic
<b>FINISHES</b>	Satin Nickel (-24)
<b>MOUNTING</b>	2" x 3" J-Box, 4" Octagonal J-Box, 4" Square J-Box with a single device mud ring
<b>STANDARDS</b>	UL Dry/Damp listed, ADA Compliant, CEC Title 24 Compliant, Conforms to UL STD 1598, Certified CAN/CSA STD C22.2 No 250.0.



**DIMENSIONS**

<b>W:</b>	<b>30.50"</b>
<b>H:</b>	<b>3.50"</b>
<b>Ext:</b>	<b>3.00"</b>
<b>M.C:</b>	<b>1.75" From top of fixture</b>

Order example for standard fixture:

**3-582-24** (x- Voltage - xxx-Sequence # - xx-Finish)

**3:** 120V to 277V

Order example for optional color temperatures: **3-582-2724**

**27:** 2700K, **35:** 3500K, **40:** 4000K

