

ELLIPSE Wall Sconce
3-567-xxx

oxygen

FIXTURE TYPE _____

LOCATION _____

PROJECT _____

DATE _____



-24 Satin Nickel



-15 Black



-24 Satin Nickel

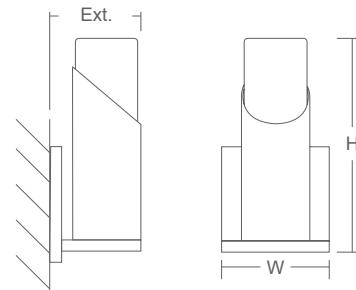
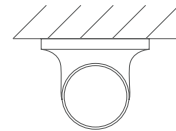


-1 White Opal Glass



-2 Matte White Acrylic

- LIGHT SOURCE** 1 x 6.2W LED, 3000K, CRI 90
- LUMINAIRE POWER** 7.1W at 120V
- RATED LIFE** 60000 hr RL
- OPTIONAL COLOR TEMPERATURES** 2700K, 3500K, 4000K
- LUMEN OUTPUT** Delivered: (-1) Glass: 132 lm (LM-79)
Delivered: (-2) Acrylic: 157 lm (LM-79)
- INPUT VOLTAGE** 120V to 277V AC, 50/60Hz
- DRIVER OUTPUT** 180mA, 7.6W max
- DIMMING** TRIAC and ELV dimming at 120V AC;
0-10V dimming, 100% to 10% current output
- CONSTRUCTION** Plated Steel and Acrylic / Glass
- METAL FINISH / DIFFUSER** (-115) White Opal Glass / Black
(-120) White Opal Glass / Polished Nickel
(-124) White Opal Glass / Satin Nickel
(-215) Matte White Acrylic / Black
(-220) Matte White Acrylic / Polished Nickel
(-224) Matte White Acrylic / Satin Nickel
- MOUNTING** 4" Octagonal J-Box*
4"x4" Square J-Box*
4"x4" Square J-Box* with single device mud ring
*Deep J-Box (Required to house driver)
- STANDARDS** UL Dry/Damp listed, ADA Compliant, Conforms to UL STD 1598,
Certified CAN/CSA, STD C22.2 No 250.0.



DIMENSIONS
W: 4.75"
H: 9.625"
Ext: 4.00"
M.C: 7.50" From Top of Fixture

Order example for standard fixture:

3-567-xxx (x-Voltage - xxx-Sequence # - x-Diffuser - xx-Finish)

Order example for optional color temperatures: **3-567-27124**

27: 2700K, **35:** 3500K, **40:** 4000K

