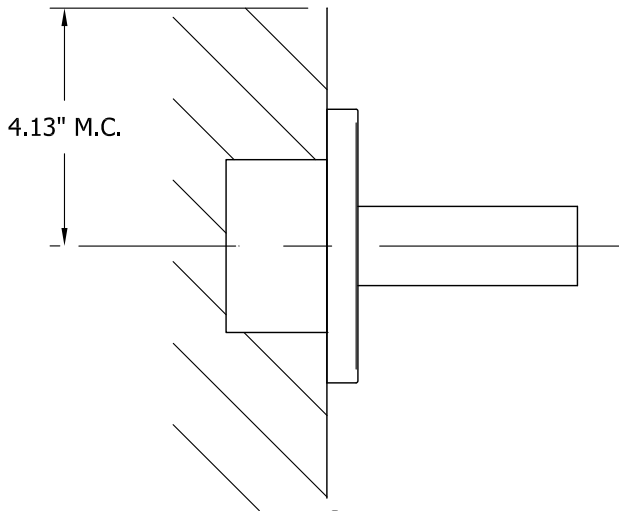
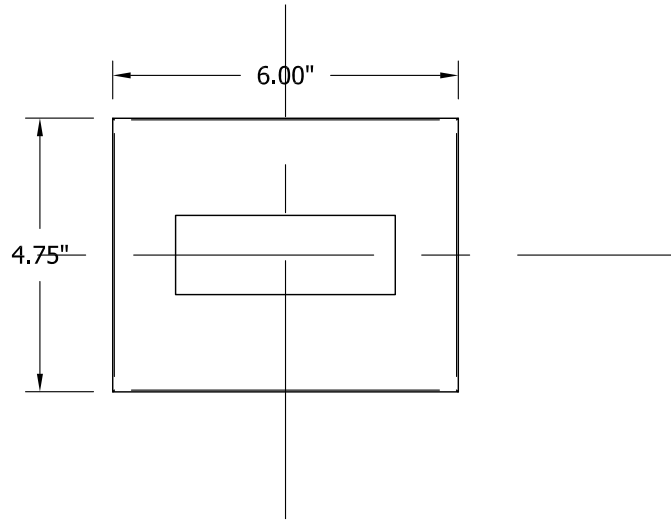


TOP VIEW



SIDE VIEW



FRONT VIEW

ERIS outdoor
 120v **3-720-16**
 277v **37-720-16**

OXYGEN LIGHTING ©

LAMPING

- o (1x) 8.2w LED array
- o 3000K, 350mA
- o Initial Lumens: 950 lm
- o Delivered Lumens: TBD
- o CRI > 90
- o 60000 Hr Life Span
- o Color Consistency: 3 Step MacAdam Ellipse

DRIVER (Dimmable)

- o (1x) 0-10v & Reverse Phase Dimming Constant Current, 12w, 350mA

METAL FINISHES

- (All finishes polyester powder coat)
- o **16** - Gray
 - o **22** - Oiled bronze

DIFFUSER

- o Clear frosted glass

INPUT VOLTAGE

- o 120v 50/60HZ
- o 277v 50/60HZ

DIMENSIONS

- o 6.00" (w) x 4.75" (h) x 4.35" (ext.)

SPECIAL NOTE

- o Add caulking around fixture base at the wall to prevent water from entering fixture.

INSTALLATION

- o 4" J-Box
- o 2.5" Deep Octagonal J-Box
- o ETL WET Listed
- o (Installer must provide a bead of caulk between fixture housing and mounting surface)
- o Wall mount
- o Conforms to UL STD 1598
- o Certified CAN/CSA STD C22.2 No. 250.0

Sample Catalog Number

Series #	Finish	=	Catalog Number
3-720	16	=	3-720-16



oxygen

OXYGEN LIGHTING
 201 RAILHEAD RD, FORT WORTH, TX 76106
 TEL. (877) 607-0202 FAX (877) 607-0203
 WWW.OXYGENLIGHTING.COM

PROJECT: _____
 DATE: _____

